

Appendix 1: Statistics

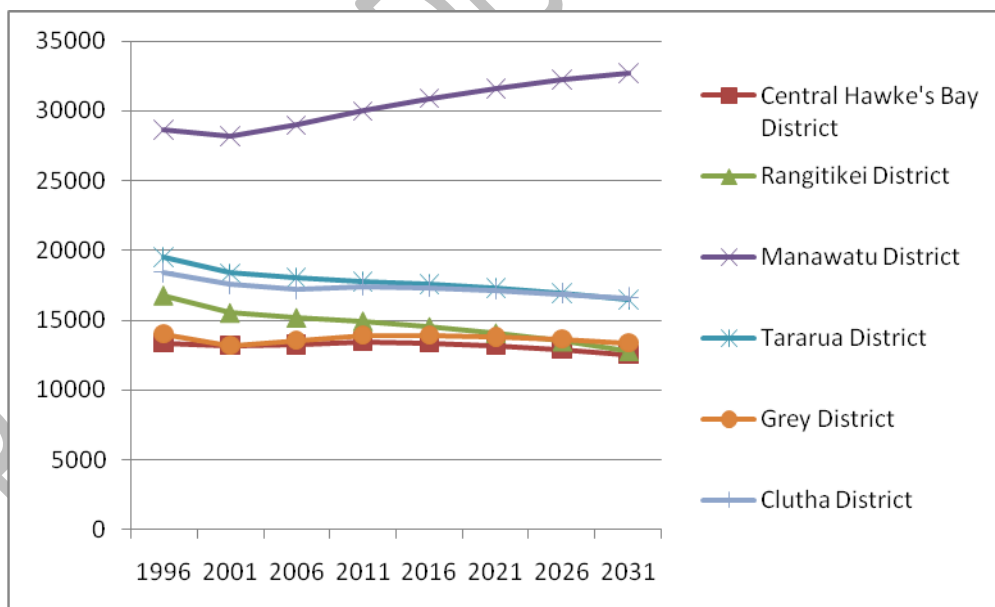
Table of Contents

Population estimates	1
Age of residents	2
Ethnicity	3
Household composition	7
Household Income	7
Earned income	9
Personal income and ethnicity	10
Educational qualifications	13
Data from Ministry for Youth Development website (January 2011)	16
Preliminary results from the Rangitikei Youth Survey	20

Population estimates

Population in the Rangitikei has been declining over the past several years and it is projected to continue that decline.

Population and projections – Statistics NZ medium series

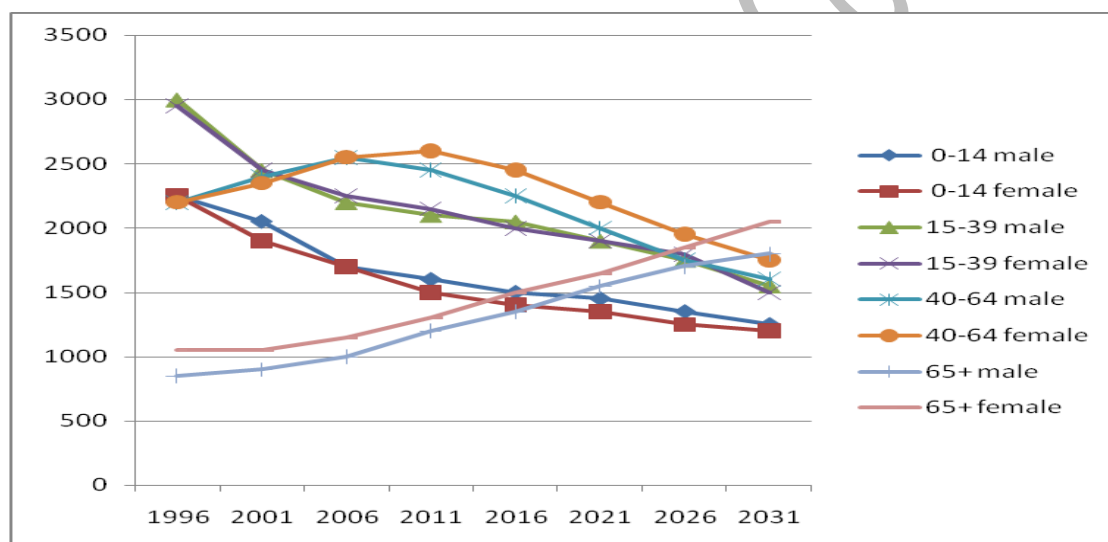


The decline is more pronounced for Rangitikei compared to the peer group of authorities.

	%age change in population 2011 – 2026	%age change in population 1996 – 2026
Central Hawke's Bay District	-4%	-3%
Rangitikei District	-10%	-20%
Manawatu District	+7%	+12%
Tararua District	-5%	-13%
Grey District	-2%	-2%
Clutha District	-3%	-8%
New Zealand	+13%	+34%

Age of residents

Population and projections by age and gender for Rangitikei District – Statistics NZ medium series



The decline in population is not evenly spread across age groups. In effect, the 65+ age group will grow from the least populous age group to the most populous over this period. The percentage change in each age group for Rangitikei District over the period is given in the table below. A comparison with the peer group of authorities shows an exactly similar trend, with Manawatu District the only area currently projected to retain and slightly increase the absolute numbers of people in the younger age groups. The trend for New Zealand predicts growth in all age groups, most markedly so for the 65+ group.

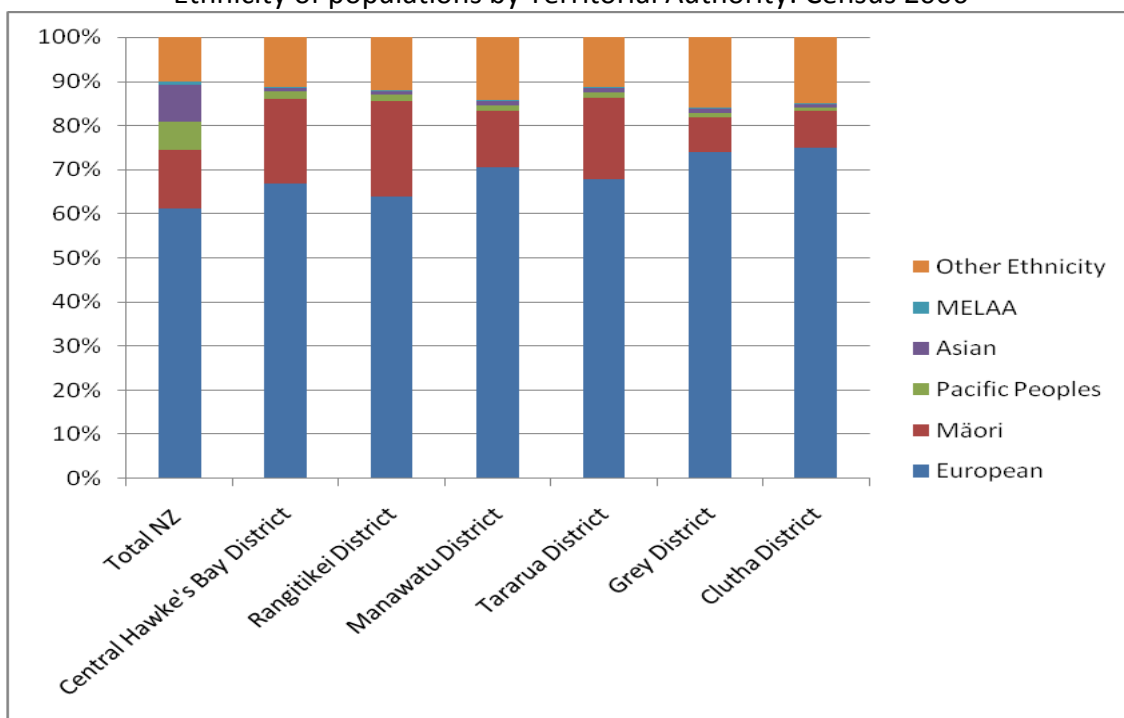
%age change between 2011 - 2026	Central Hawke's Bay District	Rangitikei District	Manawatu District	Tararua District	Grey District	Clutha District	New Zealand
0-14 years	-10%	-15%	+3%	-12%	-7%	-9%	+3%
15-39 years	-14%	-16%	+6%	-8%	-6%	-6%	+8%
40-64 years	-22%	-27%	-12%	-23%	-19%	-19%	+4%
65+ years	+68%	+47%	+65%	+54%	+56%	+47%	+61%

(Statistics New Zealand medium series)

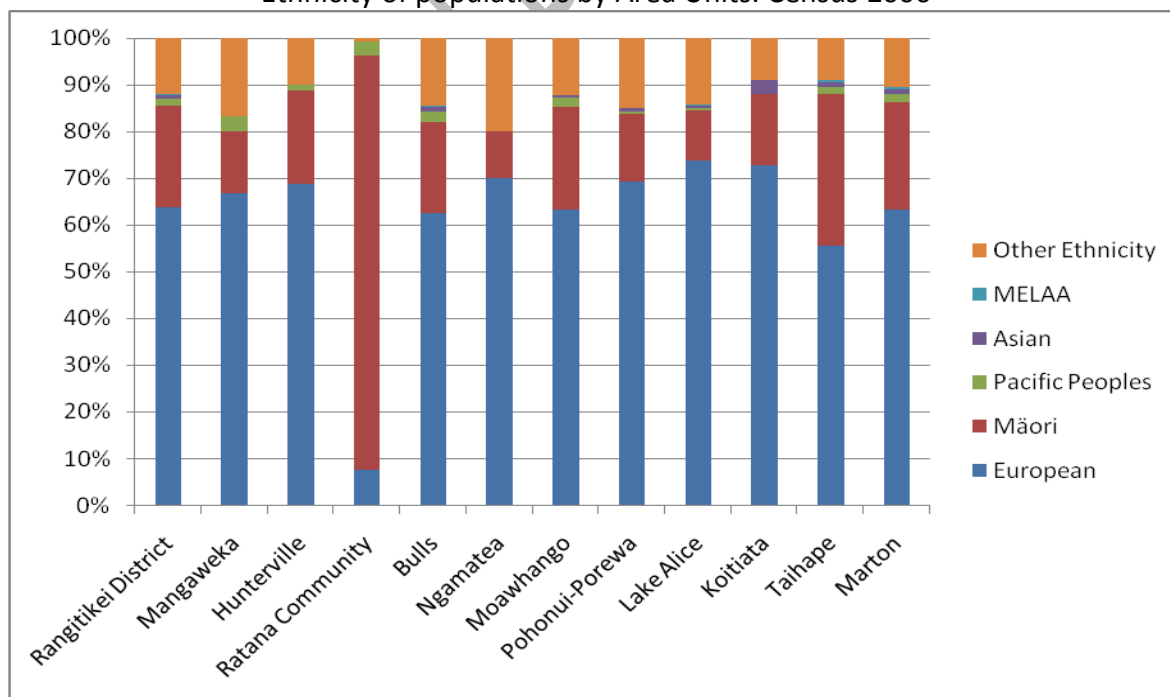
Ethnicity

The District has higher proportions of European and Māori ethnicities than any of its peer authorities. The peer group of authorities are all markedly less multi-cultural than New Zealand as a whole.

Ethnicity of populations by Territorial Authority: Census 2006



Ethnicity of populations by Area Units: Census 2006

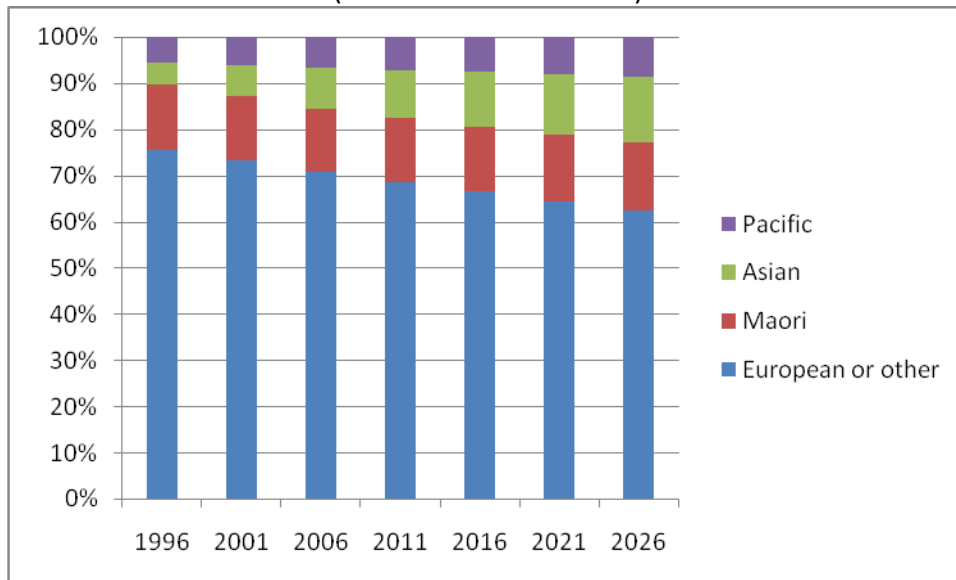


Note 1: Other ethnicity includes "New Zealander"

Note 2: MELAA is Middle Eastern/Latin American/African.

Projections for ethnicity of the population is only comprehensive at a national level. Nationally, the proportion of the “European and other” ethnic group is declining and being replaced mainly by an increased proportion of “Asian” ethnic group and, to a lesser extent, “Pacific” ethnic group. The proportion of the population that identifies as the “Māori” ethnic group remains reasonably constant at about 15%.

Projected Ethnic Population of New Zealand, 2006 (base) - 2026 Update
(Statistics New Zealand)



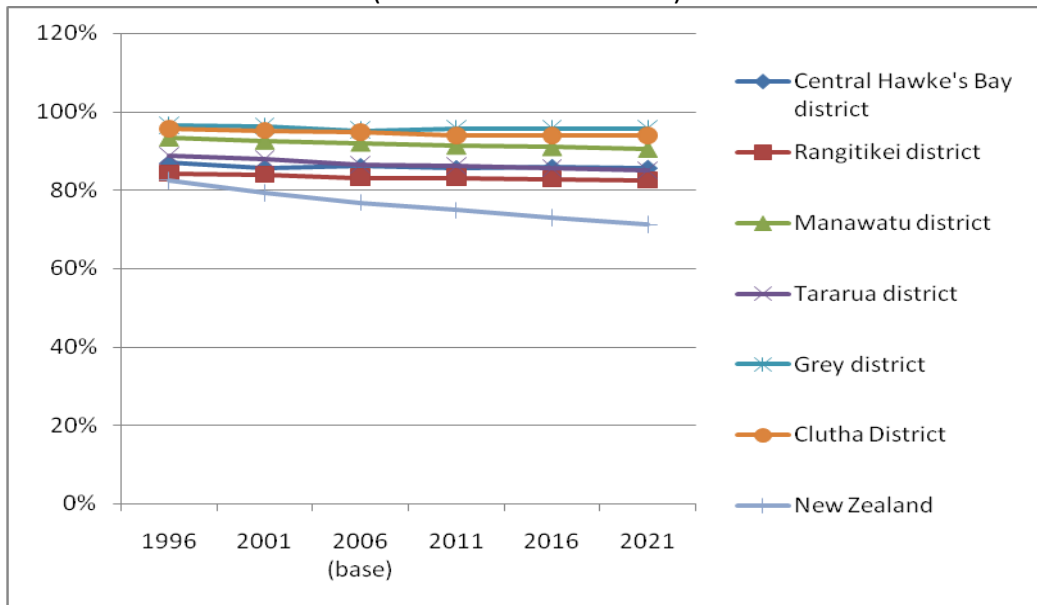
This is in the context of a growing population across all ethnic groups with the greatest growth in the “Asian” ethnic group, as below.

	Percentage increase 1996-2026
European or other	113%
Māori	141%
Asian	406%
Pacific	210%
Total NZ	136%

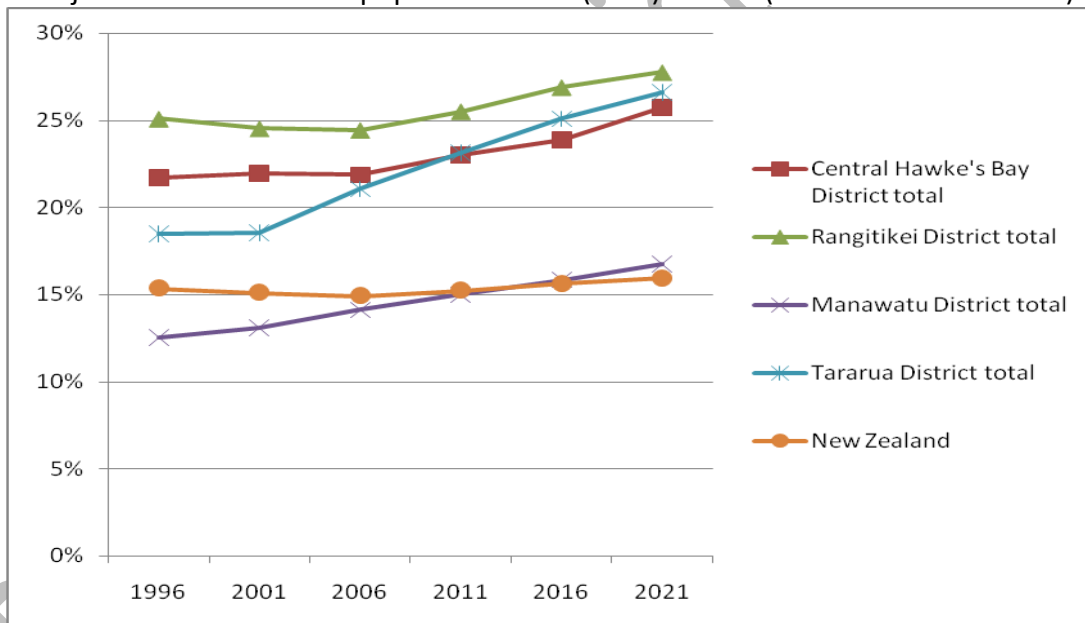
Information on projections at territorial authority level is incomplete: projections for “European and other” ethnicity are available for all the peer group of authorities, projections for “Māori” ethnicity are available only for Central Hawke’s Bay, Rangitikei, Manawatu and Taranaki. Information on other ethnicities is not available.

The peer group of authorities have a higher proportion of the population identifying as the “European or other” ethnic group than nationally. It is worth noting that the proportion remains reasonably constant for all the peer authorities: the cultural diversity that has marked New Zealand nationally has not impacted in Rangitikei or the peer authority areas.

Projected “European and other” ethnic population 2006 (base) - 2021
(Statistics New Zealand)



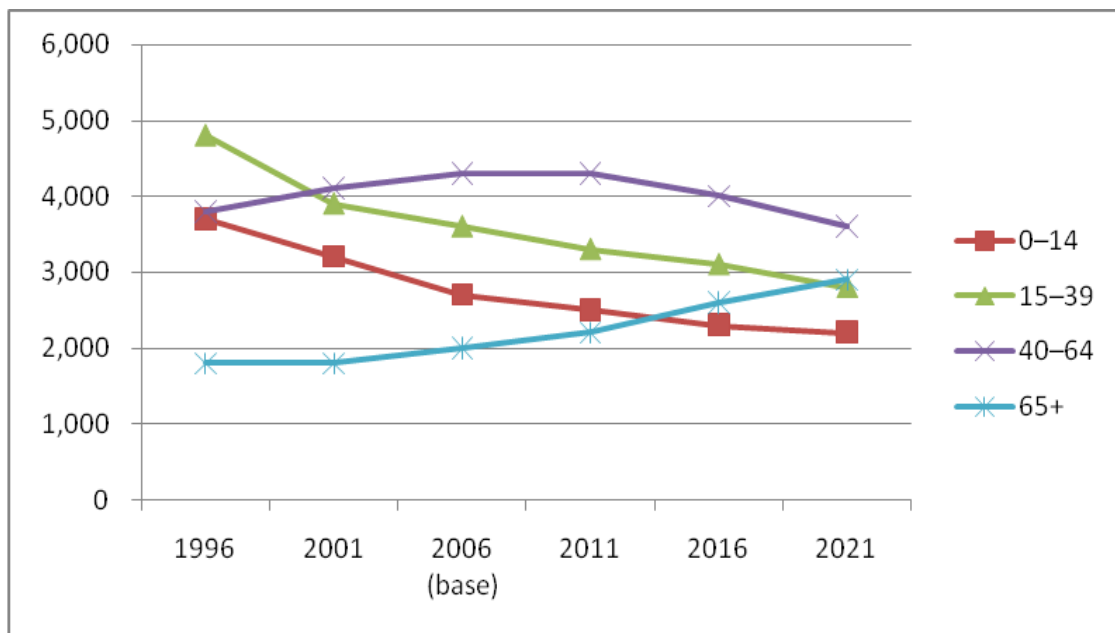
Projected “Māori” ethnic population 2006 (base) – 2021 (Statistics New Zealand)



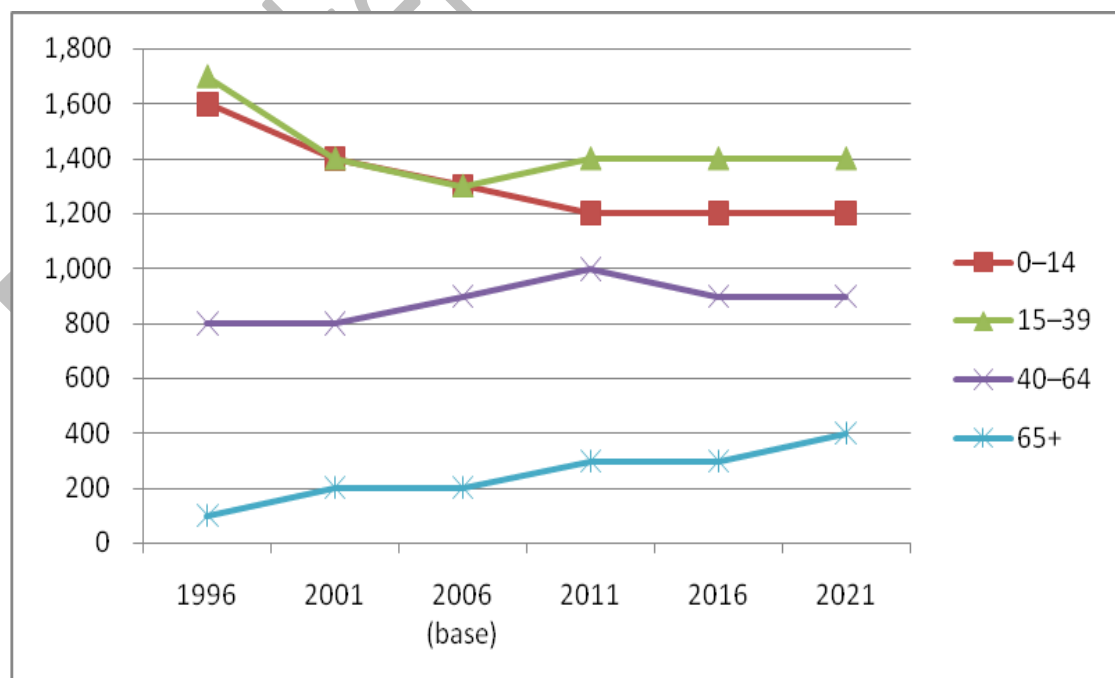
The peer group of authorities have a higher proportion of the population identifying as the “Māori” ethnic group than nationally, and the proportion is rising (c.f. with the steady 15% at a national level). It is worth noting both the general trend that people are more likely to identify themselves as belonging to the ethnic group “New Zealander” (included within the “European and other” category) and that people can identify with more than one ethnic group (and therefore total’s do not add up to 100%). It is also worth remembering that the figures for the peer authorities are within the context of a declining population (with the exception of Manawatu District). This implies that net migration is occurring more from within the “European and other” category.

The age profile of the two main ethnicities in the District are also markedly different. The median age for “European or other” ethnicities in Rangitikei is currently 38.8 years, rising to 47.2 years in 2021 (compared with 41.6 years nationally) and for the “Māori” ethnic group in Rangitikei is currently 24.8 years, rising to 27.3 years in 2021 (compared with 24.8 years nationally).

Composition by age of “European or other” ethnic group in Rangitikei 2006 (base) – 2021
(Statistics New Zealand)



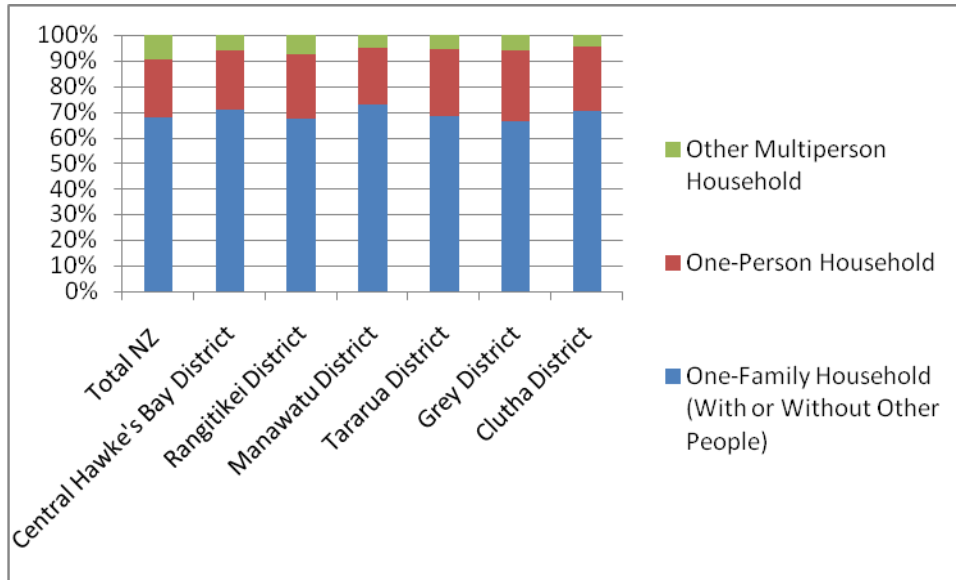
Composition by age of “Māori” ethnic group in Rangitikei 2006 (base) – 2021
(Statistics New Zealand)



Household composition

Generally in New Zealand, people tend to live either in one-family or one-person households.

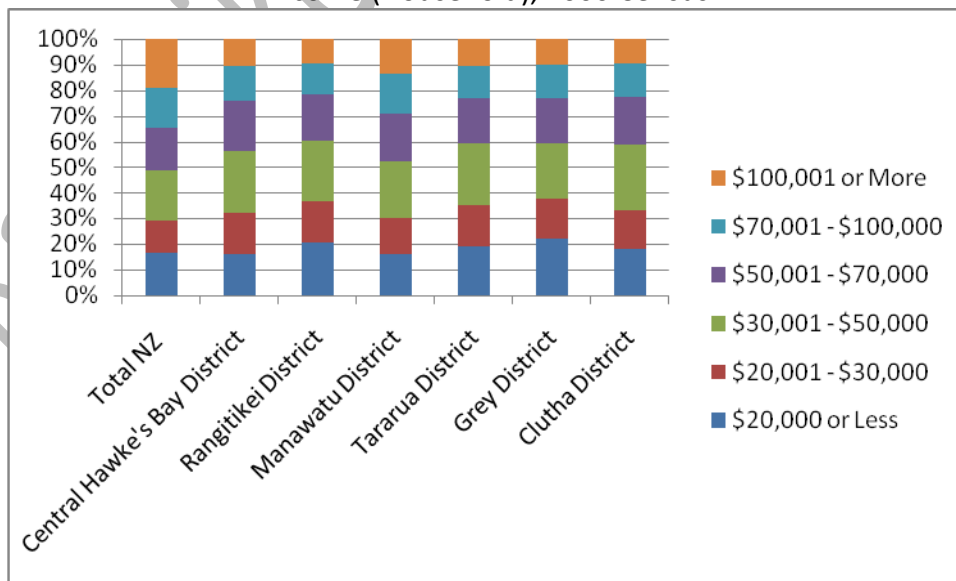
Household Composition 2006 Census



Household Income

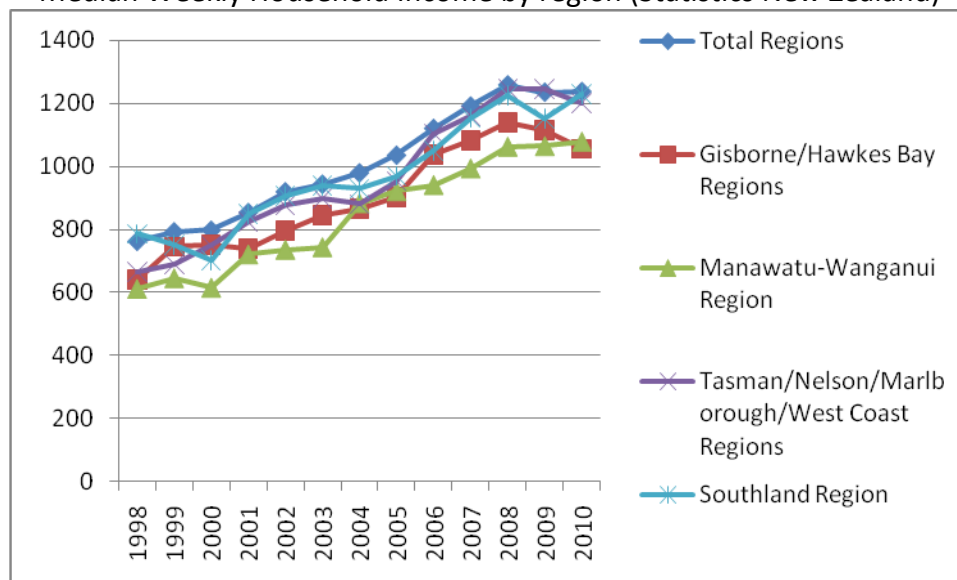
In common with its peer group of authorities, Rangitikei tended to have a higher proportion of its households on lower income levels.

Income (Household), 2006 Census



Lower income levels has been a consistent feature of household income at a regional level in the longitudinal data. It is worth noting that the average income nationally and across the regions is consistently about \$100 above the median income. In other words, the income distribution is skewed towards the lower household income values.

Median Weekly Household Income by region (Statistics New Zealand)

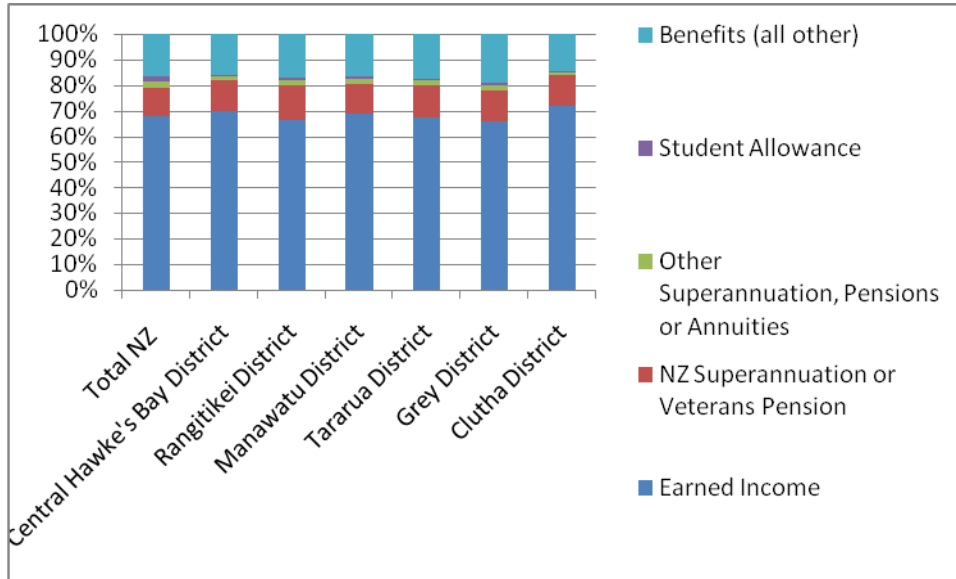


Analysis of the variance in household incomes across household types shows that there are more single-person households living on incomes of less than \$20,000 in Rangitikei than nationally (53% compared to 46%) whereas other households in Rangitikei begin to lag behind national household incomes in the \$20,000 - \$50,000 income bracket.

Household Income/Composition	Other Household NZ	Other Household Rangitikei	One-Person Household NZ	One-Person Household Rangitikei	Total NZ	Total Rangitikei
\$20,000 or Less	7%	8%	46%	53%	16%	20%
\$20,001 - \$30,000	12%	15%	17%	20%	13%	16%
\$30,001 - \$50,000	19%	25%	22%	19%	20%	23%
more than \$50,000	62%	52%	16%	8%	51%	40%

Sources of household income did not vary significantly across the peer authorities or compared with New Zealand generally.

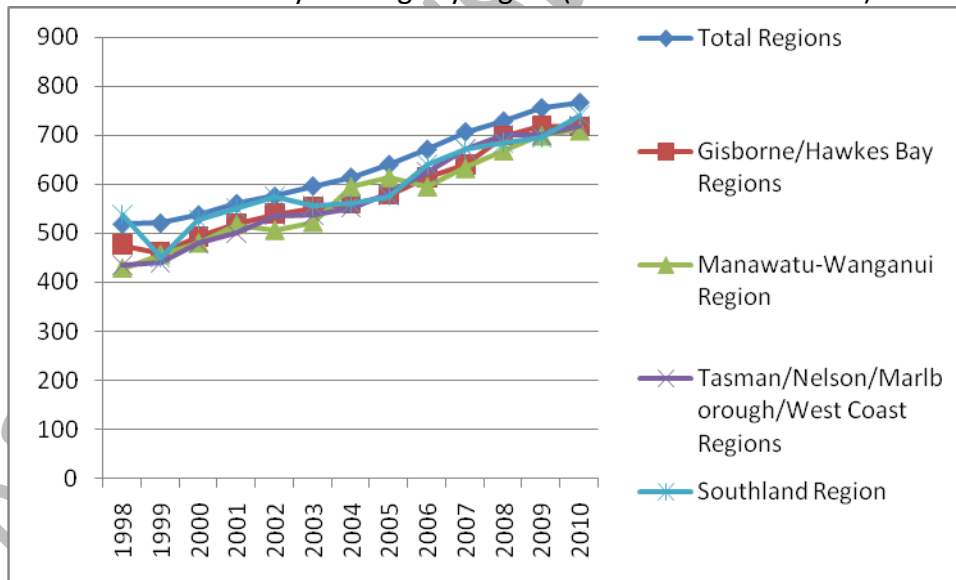
Sources of household income, 2006 Census



Earned income

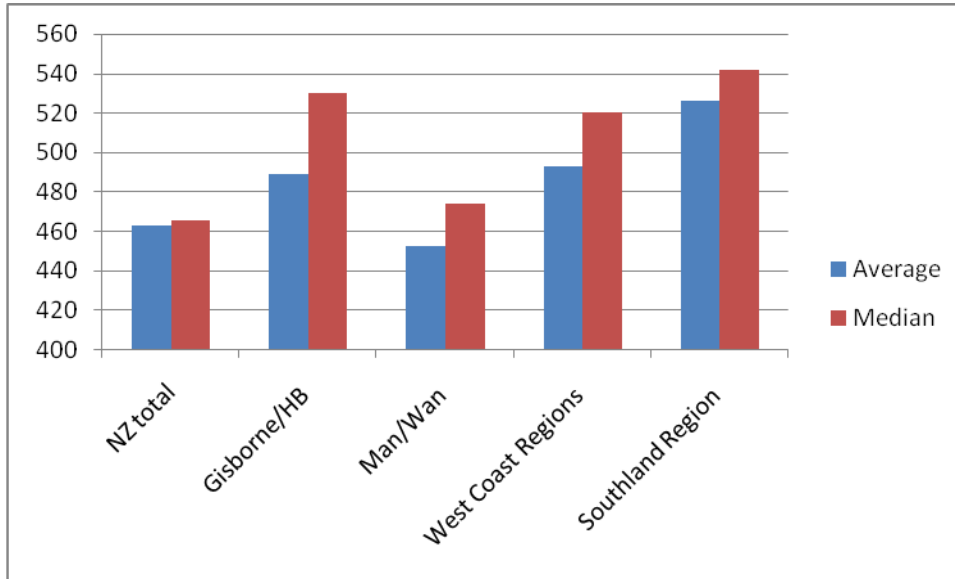
The trend for median weekly earnings has followed a consistent pattern over the past ten years with the peer group of regional authorities having lower median earnings than the national median.

Median Weekly Earnings by region (Statistics New Zealand)



Again, it is worth noting that average weekly earnings nationally and across the regions are consistently higher than the median income except for the 15-24 years age group where median weekly earnings are higher than the average weekly earnings. In other words, in this particular instance, the income distribution is skewed towards the higher values in the regional data set and less markedly in the national data set.

Earnings by region 2010 15-24 year age group (Statistics New Zealand)

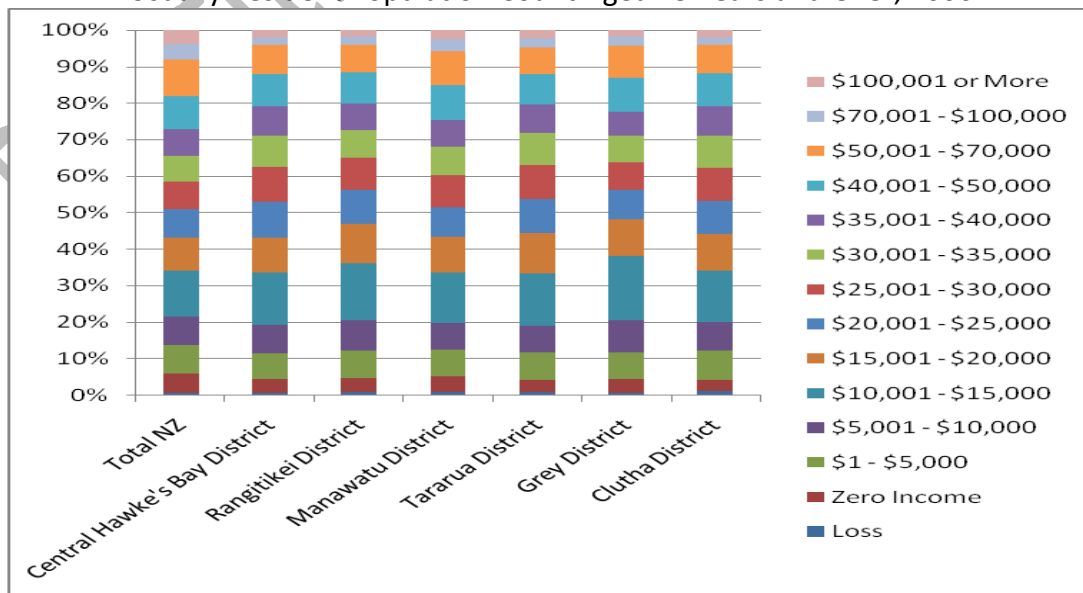


This implies that in the regions, more young people in this age group are in employment and earning wages. This is confirmed in the data presented in the particular section discussing young people. Median weekly earnings for this age group in the Rangitikei are about 62% of the median weekly earnings for those aged 25-64 years and about 83% of the median weekly earnings for those aged 65+ years. The respective percentages for the average weekly earnings are 53% and 72%.

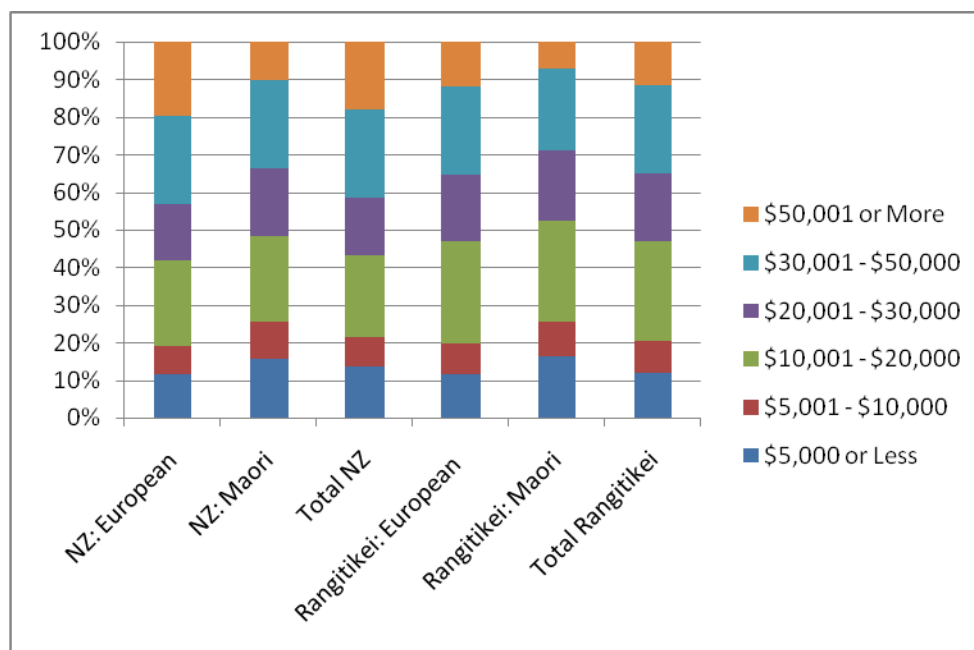
Personal income and ethnicity

Generally, the trend is for lower levels of personal income within the peer group of authorities than nationally. The exception is for Manawatu which has broadly similar personal income levels as demonstrated nationally.

Total Personal Income for the Census
Usually Resident Population Count Aged 15 Years and Over, 2006



Total Personal Income by Ethnic Group for the Census Usually Resident Population Count Aged 15 Years and Over, 2006



The picture that emerges for Rangitikei is generally one of lower personal incomes than nationally. Across both data sets, there is greater representation of Māori in the lower income brackets. For example, in Rangitikei, 71% of Māori aged 15 or over had total personal incomes of less than \$30,000 compared to 65% of those of European ethnicity (the respective figures nationally were 66% and 57%)

Sources of Personal Income by Ethnic Group, for the Census Usually Resident Population Count Aged 15 Years and Over, 2006

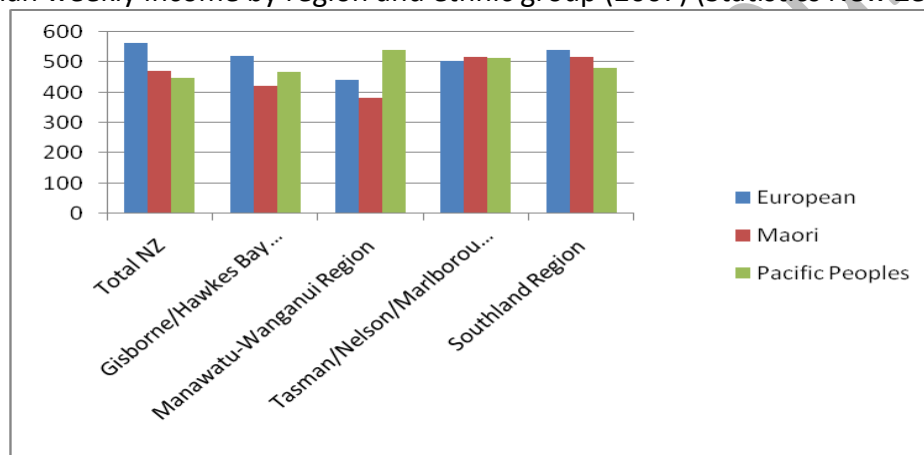
	NZ: European	NZ: Māori	Total NZ	Rangitikei: European	Rangitikei: Māori	Total Rangitikei
Wages, Salary, Commissions, Bonuses etc Paid by Employer	59%	61%	56%	55%	63%	55%
Self-employment or Business	18%	8%	16%	21%	7%	19%
Interest, Dividends, Rent, Other Investments	27%	7%	23%	24%	7%	22%
Other Superannuation, Pensions or Annuities	3%	1%	3%	3%	1%	2%
Student Allowance	2%	3%	2%	1%	2%	1%
NZ Superannuation or Veterans Pension	18%	6%	14%	21%	9%	18%
Benefits (all other)	16%	33%	17%	17%	29%	18%

Generally there tends to be a lower proportion of Māori receiving income from self employment or investment and NZ Superannuation or Veterans Pension and higher proportions receiving income from employment and other benefits. Māori life expectancy at

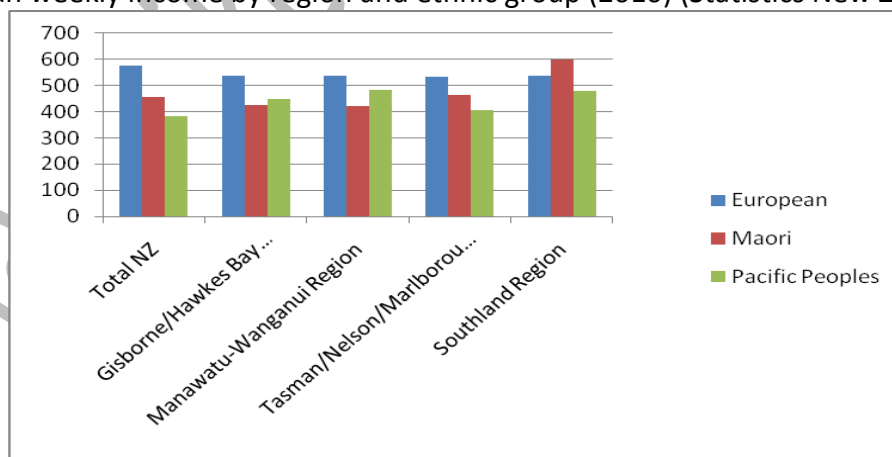
birth is about 8.2 years lower than for non-Māori¹ and there is no doubt a link between this and the higher proportion of Māori on other benefits rather than NZ Superannuation. It is also worth noting that nationally, the European ethnic group earns 3% more than national median weekly earnings whilst Māori and Pacific Peoples ethnic groups earn 9% and 13% less respectively.

Some longitudinal data in weekly personal income and ethnicity is available through Statistics New Zealand. However, the data in this area for the peer group of regional authorities compared to national figures shows no clear trend. The graph below gives results for 2007 and 2010 demonstrating the variation in personal weekly income. This could be for a number of reasons, presumably in response to very local and changeable economic conditions. As outlined above, there is a trend for people to identify themselves as belonging to the ethnic group “New Zealander” (included below within the “Other Ethnic Group” category) which can further confuse the longitudinal trend.

Median weekly income by region and ethnic group (2007) (Statistics New Zealand)



Median weekly income by region and ethnic group (2010) (Statistics New Zealand)

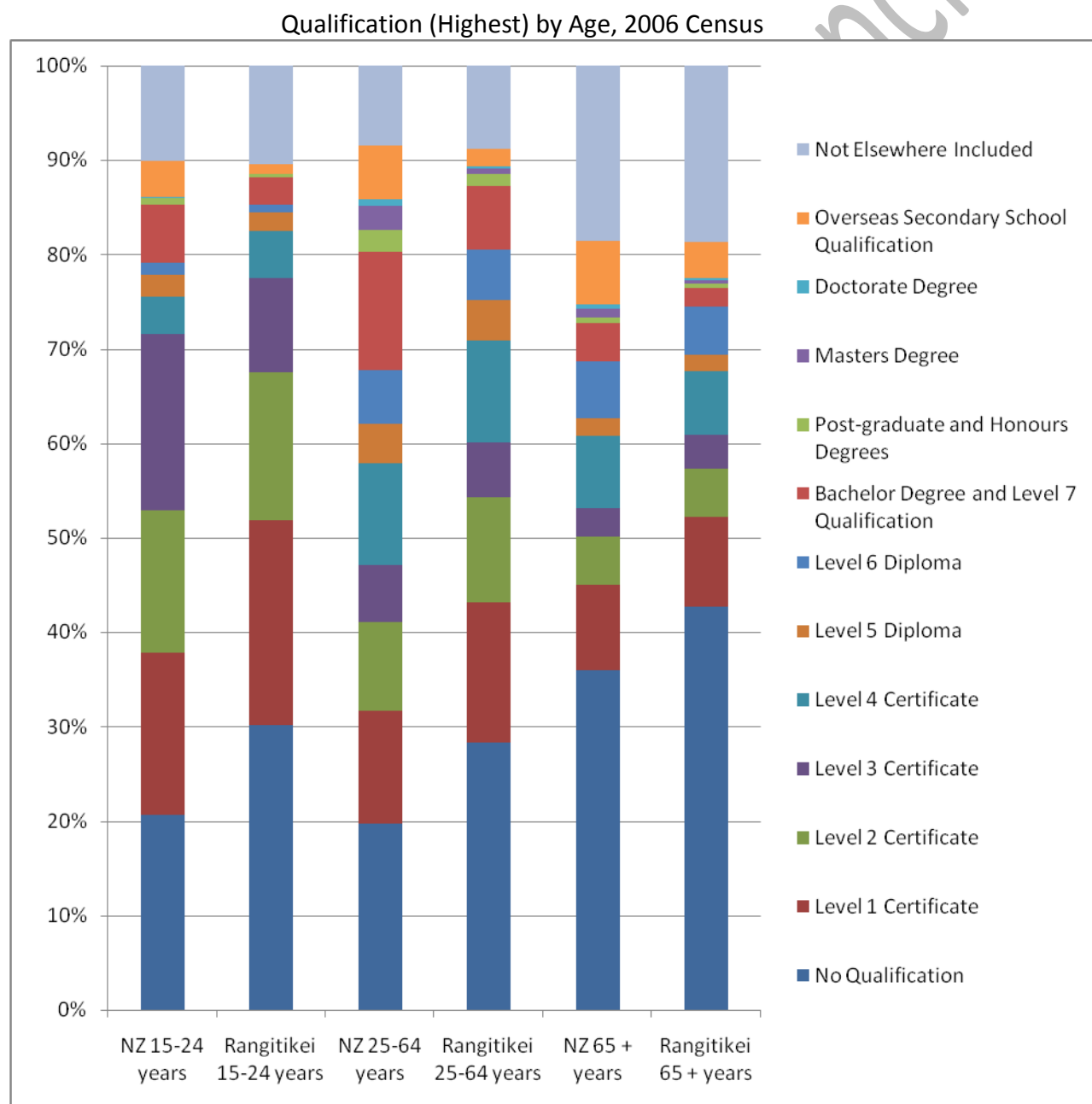


¹ A newborn Māori girl can expect to live 75.1 years and a newborn Māori boy 70.4 years, compared with 83.0 years for a non-Māori girl and 79.0 years for a non-Māori boy. The longevity gap between Māori and non-Māori has closed slightly: the difference in life expectancy at birth of 8.2 years in 2005–07 compares with 8.5 years in 2000–02 and 9.1 years in 1995–97.

Educational qualifications

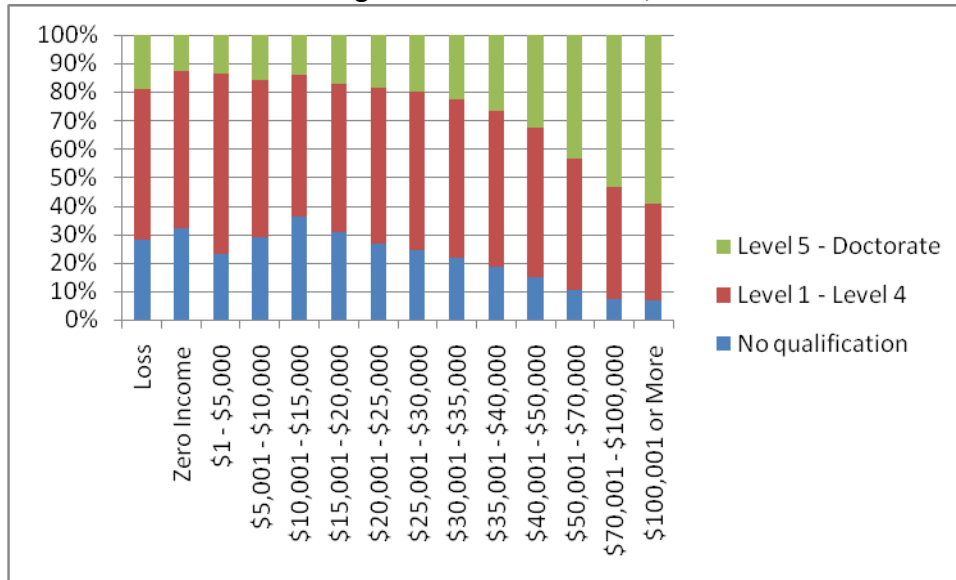
The final set of nationally available statistics relates to educational qualification amongst the population. Rangitikei tends to have lower educational attainment than nationally: 31% of the local population has no formal qualifications compared to 22% nationally. Even amongst 20-24 year olds, 23% of the local population has no qualification compared with 13% nationally. This trend is similar for the peer group of authorities.

% with no formal qualifications	New Zealand	Rangitikei District	Manawatu District	Tararua District	Grey District	Clutha District
Total population	22%	31%	29%	33%	33%	33%
20-24 Years	13%	23%	19%	24%	26%	22%



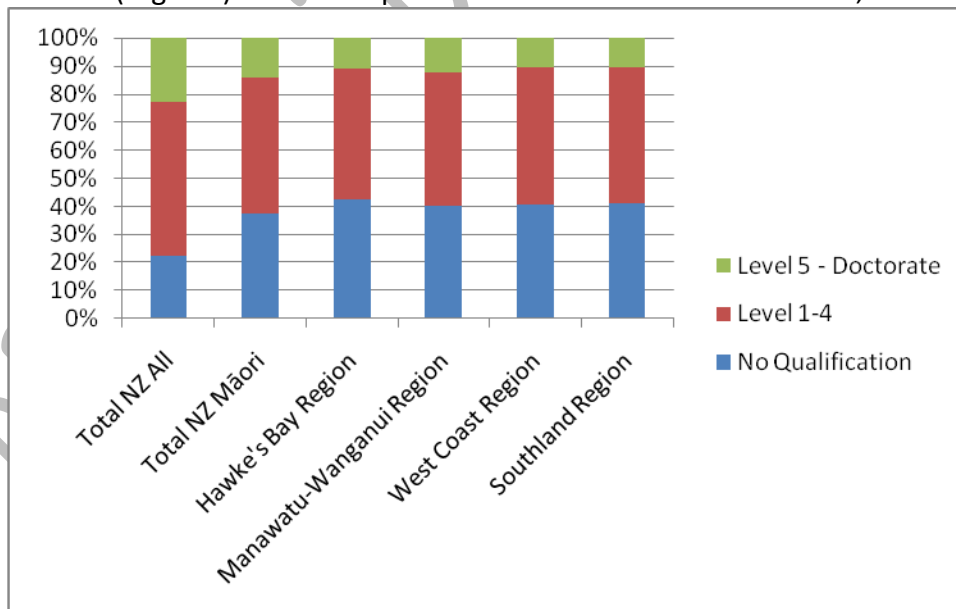
There is a link between highest educational qualification and level of personal income: the better qualified then the greater the income level. This needs to be seen in the context of suitable employment opportunities.

Total Personal Income and Highest Qualification for the Census Usually Resident Population Count Aged 15 Years and Over, 2006



The regional figures at the 2006 Census for highest qualification for Māori populations are given below. If 22% of the total population has no formal qualification, this rises to 37% for Māori nationally and over 40% in the peer regions.

Qualification (Highest) Māori compared with total across New Zealand, 2006 Census



Footnote:

1 If the median income value is lower than the mean (or average) income value then more than 50% of the sample are earning less than the average income. Conversely if the median income value is higher than the mean (or average) income value then more than 50% of the sample are earning more than the average income. The wider the discrepancy between the two, the greater the number of the sample who fall below (or above) the mean (or average) value. (Extract from <http://www.conceptstew.co.uk>)

Is the mean or median better to describe "average" income?

What is the mean? The mean is an average, one of several that summarise the typical value of a set of data. The mean is the grand total divided by the number of data points.

What is the median? The median is the middle value in a sample sorted into ascending order. If the sample contains an even number of values, the median is defined as the mean of the middle two.

Which is better? Is it better to use the mean or the median? This may sound like an obscure technical question, but it really can matter. The short answer is "it depends" - to know which you should use, you must know how your data is distributed. The mean is the one to use with symmetrically distributed data; otherwise, use the median. If you follow this rule, you will get a more accurate reflection of an 'average' value.

This question was at the heart of a UK news story in 2005, where the use of median or mean was at the bottom of substantial national confusion. The following paragraphs tell the story.

In early April 2005 there was considerable debate in the UK media about whether 'average' incomes had gone up or down. The Institute for Fiscal Studies produced a report in which they stated that the mean 'real household income' fell by 0.2% over 2003/04 against the previous year. This sounds very authoritative, but it is worth pausing to consider if the mean is really the most appropriate measure.

The mean is calculated by adding together all the values, and then dividing them by the number of values you have. As long as the data is symmetrically distributed (that is, if when you plot them on a frequency chart you get a nice symmetrical shape) this is fine - but the mean can still be thrown right out by a few extreme values, and if the data is not symmetrical (i.e. skewed) it can be downright misleading.

It only takes a moment's thought to realise that more people earn low salaries than high ones, because a fairly large proportion of the population works part-time - so the data will not be symmetrically distributed. Therefore the mean is not the best 'average' to use in this case.

The median, on the other hand, really is the middle value. 50% of values are above it, and 50% below it. So when the data is not symmetrical, this is the form of 'average' that gives a better idea of any general tendency in the data. The same report from the IFS states that median real household incomes rose for the same period by 0.5%.

We are all much more familiar with the mean - why? People like using the mean because it is a much easier thing to deal with than the median, mathematically, particularly in more complex situations: but as we have seen, it carries an assumption with it that the distribution is symmetrical. A great deal of data is symmetrical; the normal distribution is so named for this reason. But unfortunately because the mean is seen so frequently this distinction gets forgotten - in many people's minds the 'average' is the mean - and then the mean is wrongly used to summarise non-symmetrical populations.

Data from Ministry for Youth Development website (January 2011)

Table a: Age

Territorial Authority	Total population	12 to 24 age group				
		Number aged 12 to 14	Number aged 15 to 19	Number aged 20 to 24	Total aged 12 to 24	12 to 24s as proportion (%) of total population
Central Hawke's Bay District	12,960	687	912	585	2,184	16.90%
Clutha District	16,842	831	1,044	735	2,610	15.50%
Grey District	13,212	675	894	618	2,187	16.60%
Manawatu District	28,257	1,584	2,214	1,284	5,082	18.00%
Rangitikei District	14,709	735	1,056	768	2,559	17.40%
Tararua District	17,619	915	1,254	771	2,940	16.70%
National average	55,178	2,547	4,112	3,712	10,371	18.80%

Table b: Gender

Territorial Authority	Males		Females	
	Number	Proportion (%)	Number	Proportion (%)
Central Hawke's Bay District	1,170	53.60%	1,014	46.40%
Clutha District	1,434	54.90%	1,176	45.10%
Grey District	1,137	52.00%	1,050	48.00%
Manawatu District	2,706	53.20%	2,376	46.80%
Rangitikei District	1,284	50.20%	1,275	49.80%
Tararua District	1,512	51.40%	1,428	48.60%
National average	na	50.60%	na	49.40%

Table c: Ethnicity

Territorial Authority	European		Māori		Pacific		Asian		Other		Not stated	
	No.	Proportion (%)	No.	Proportion (%)	No.	Proportion (%)	No.	Proportion (%)	No.	Proportion (%)	No.	Proportion (%)
Central Hawke's Bay District	1,698	77.70%	711	32.60%	81	3.70%	24	1.10%	3	0.10%	45	2.10%
Clutha District	2,328	89.20%	384	14.70%	33	1.30%	45	1.70%	3	0.10%	63	2.40%
Grey District	2,001	91.50%	291	13.30%	36	1.60%	39	1.80%	6	0.30%	54	2.50%
Manawatu District	4,398	86.50%	1,110	21.80%	135	2.70%	90	1.80%	15	0.30%	84	1.70%
Rangitikei District	1,893	74.00%	873	34.10%	78	3.00%	27	1.10%	9	0.40%	108	4.20%
Tararua District	2,367	80.50%	819	27.90%	69	2.30%	57	1.90%	3	0.10%	81	2.80%
National average	na	67.30%	na	18.70%	na	8.90%	na	12.50%	na	1.20%	na	4.40%

Rangitikei District

Table d: Education

Territorial Authority	Proportion (%) of young people still at school at age 17.5	Proportion (%) of school leavers with NCEA Level 2 or above	Proportion (%) of population aged 25 to 34 with Bachelor's degree or higher
Central Hawke's Bay District	56.70%	48.00%	15.40%
Clutha District	57.90%	70.00%	12.90%
Grey District	38.50%	34.60%	13.20%
Manawatu District	56.50%	65.60%	16.70%
Rangitikei District	56.50%	56.50%	12.40%
Tararua District	45.20%	59.40%	10.70%
National average	60.80%	62.00%	26.70%

Table e: Economic Well-being

Territorial Authority	Employment for ages 15 to 24		Unemployment for ages 15 to 24		Proportion (%) of 15 to 24 year olds living in crowded housing	Proportion (%) of 15 to 24 year olds living in a low-income household
	Number	Rate	Number	Rate		
Central Hawke's Bay District	939	63.00%	96	9.30%	12.80%	14.10%
Clutha District	1,197	67.20%	87	6.80%	6.70%	12.30%
Grey District	1,050	69.40%	75	6.70%	7.70%	21.50%
Manawatu District	2,208	63.10%	291	11.60%	8.50%	22.60%
Rangitikei District	1,119	61.30%	102	8.40%	10.60%	13.60%
Tararua District	1,290	63.40%	144	10.00%	9.60%	12.80%
National average	na	55.40%	na	13.30%	17.00%	17.50%

Table f: Volunteering

Territorial Authority	Formal volunteering in the last four weeks	
	Number	Proportion (%) of total population
Central Hawke's Bay District	141	10.50%
Clutha District	168	10.30%
Grey District	180	13.00%
Manawatu District	348	10.90%
Rangitikei District	195	12.10%
Tararua District	183	10.10%
National average	na	9.70%

Table g: Benefits receipt

Territorial Authority	Proportion of young people aged 16 to 24 in receipt of any benefit	Proportion of young people aged 16 to 24 in receipt of a main benefit
Central Hawke's Bay District	9.10%	8.80%
Clutha District	5.50%	5.00%
Grey District	11.10%	9.90%
Manawatu District	6.70%	5.60%
Rangitikei District	11.80%	10.20%
Tararua District	12.40%	10.10%
National average	8.10%	6.80%

Table h: Smoking

Territorial Authority	Ages 15 to 19		Ages 20 to 24		Ages 15 to 24	
	Number	(%)	Number	Proportion (%)	Number	Proportion (%)
Central Hawke's Bay District	201	24.20%	225	41.90%	426	31.10%
Clutha District	231	24.00%	333	47.80%	564	34.00%
Grey District	174	20.90%	210	37.00%	384	27.50%
Manawatu District	447	21.60%	456	37.50%	903	27.50%
Rangitikei District	234	24.70%	294	41.20%	528	31.80%
Tararua District	267	23.50%	306	43.00%	573	31.10%
National average	na	18.80%	na	29.80%	na	24.00%

Preliminary results from the Rangitikei Youth Survey

GENDER OF RESPONDENT						
	SOUTH RANGITIKEI		NORTH RANGITIKEI		COMBINED	
	#	%	#	%	#	%
MALE	82	47%	40	37%	122	43%
FEMALE	93	53%	67	63%	160	57%
TOTAL	175	100%	107	100%	282	100%

TOWN OF RESPONDENT						
	SOUTH RANGITIKEI		NORTH RANGITIKEI		COMBINED	
	#	%	#	%	#	%
BULLS	9	5%	-	-	9	3.17%
MARTON	161	92%	-	-	161	56.69%
HUNTERVILLE	5	3%	-	-	5	1.76%
OHINGAITI	-	-	2	2%	2	0.70%
MANGAWEKA	-	-	2	2%	2	0.70%
TAIHAPE	-	-	82	75%	82	28.87%
WAIOURU	-	-	23	21%	23	8.10%
TOTAL	175	100%	109	100%	284	100%

AGE OF RESPONDENT						
	SOUTH RANGITIKEI		NORTH RANGITIKEI		COMBINED	
	#	%	#	%	#	%
13	30	17%	16	15%	46	16%
14	35	20%	24	22%	59	21%
15	36	21%	26	24%	62	22%
16	31	18%	21	19%	52	18%
17	31	18%	11	10%	42	15%
18	12	7%	10	9%	22	8%
19	0	0%	0	0%	0	0%
TOTAL	175	100%	108	100%	283	100%

ETHNICITY OF RESPONDENT						
	SOUTH RANGITIKEI		NORTH RANGITIKEI		COMBINED	
	#	%	#	%	#	%
EUROPEAN	107	57%	36	30%	143	46%
MĀORI	64	34%	50	42%	114	37%
NEW ZEALANDER	5	3%	20	17%	25	8%
PASIFIKA	7	4%	6	5%	13	4%
OTHER	6	3%	7	6%	13	4%
TOTAL	189	100%	119	100%	308	100%

BIRTH PLACE OF RESPONDENT						
	SOUTH RANGITIKEI		NORTH RANGITIKEI		COMBINED	
	#	%	#	%	#	%
RANGITIKEI	28	17%	23	23%	51	19%
MANAWATU/WANG ANUI	82	49%	32	32%	114	42%
OTHER NEW ZEALAND	50	30%	40	40%	90	33%
AUSTRALIA/PACIFIC ISLANDS	3	2%	2	2%	5	2%
OTHER	5	3%	4	4%	9	3%
TOTAL	168	100%	101	100%	269	100%

DESCRIBE YOURSELF						
	SOUTH RANGITIKEI		NORTH RANGITIKEI		COMBINED	
	#	%	#	%	#	%
HAPPY	147	11%	95	11%	242	11%
CALM	91	7%	59	7%	150	7%
FUN LOVING	85	6%	60	7%	145	6%
MISCHIEVOUS	41	3%	28	3%	69	3%
SAD	15	1%	11	1%	26	1%
NEGATIVE	16	1%	17	2%	33	1%
POSITIVE	96	7%	61	7%	157	7%
ACADEMIC	53	4%	38	4%	91	4%
NAUGHTY	33	2%	19	2%	52	2%
LAZY	44	3%	22	2%	66	3%
ENERGETIC	96	7%	60	7%	156	7%
MUSICAL	63	5%	38	4%	101	4%
CARING	100	7%	66	7%	166	7%
NON-CARING	13	1%	6	1%	19	1%
ALERT	34	2%	20	2%	54	2%
DOZY	24	2%	16	2%	40	2%
BUSY	44	3%	35	4%	79	3%
NON-ACHIEVER	10	1%	4	0%	14	1%
SPORTY	82	6%	64	7%	146	6%
GAMER	60	4%	32	4%	92	4%
DETERMINED	75	5%	53	6%	128	6%
AGGRESSIVE	31	2%	16	2%	47	2%
OPTIMISTIC	34	2%	28	3%	62	3%
HIGH ACHIEVER	54	4%	27	3%	81	4%
OTHER 1	34	2%	17	2%	51	2%
OTHER 1	18	1%	4	0%	22	1%
TOTAL	1393	100%	896	100%	2289	100%

IMPROVEMENTS FOR YOUNG PEOPLE						
	SOUTH RANGITIKEI		NORTH RANGITIKEI		COMBINED	
	#	%	#	%	#	%
PLACES TO HANG OUT	123	28%	73	26%	196	27%
MAKING TOWNS SAFER	67	16%	31	11%	98	14%
KNOWING WHERE TO GO FOR HELP	44	10%	30	10%	74	10%
MORE JOB OPPS	98	23%	79	28%	177	25%
LEISURE OPPS	99	23%	73	26%	172	24%
OTHER	1	0%	0	0%	1	0%
TOTAL	432	100%	286	100%	718	100%

POSITIVE IMPACT						
	SOUTH RANGITIKEI		NORTH RANGITIKEI		COMBINED	
	#	%	#	%	#	%
YOUTH SPACE	50	10%	53	14%	103	12%
BETTER RANGE OF SHOPS	107	21%	67	18%	174	20%
GRAFFITI ART COMP	50	10%	47	13%	97	11%
YOUTH EVENT SERIES	59	12%	45	12%	104	12%
A SAFE PLACE TO HANG OUT	71	14%	40	11%	111	13%
CARNIVALS / CONCERTS	80	16%	64	17%	144	17%
GAMING AREA	84	17%	52	14%	136	16%
OTHER	0	0%	1	0%	1	0%
TOTAL	501	100%	369	100%	870	100%

PRIDE IN THE RANGITIKEI						
	SOUTH RANGITIKEI		NORTH RANGITIKEI		COMBINED	
	#	%	#	%	#	%
YES	110	73%	74	76%	184	74%
NO	41	27%	23	24%	64	26%
ALL	151	100%	97	100%	248	100%

RANGITIKEI YOUTH COMMITTEE – GOOD IDEA						
	SOUTH RANGITIKEI		NORTH RANGITIKEI		COMBINED	
	#	%	#	%	#	%
YES	69	62%	68	75%	137	67%
NO	43	38%	23	25%	66	33%
ALL	112	100%	91	100%	203	100%

RANGITIKEI YOUTH COMMITTEE – PERSONAL INVOLVEMENT						
	SOUTH RANGITIKEI		NORTH RANGITIKEI		COMBINED	
	#	%	#	%	#	%
YES	33	29%	31	33%	64	31%
NO	79	71%	63	67%	142	69%
ALL	112	100%	94	100%	206	100%

SKILL OPPORTUNITIES						
	SOUTH RANGITIKEI		NORTH RANGITIKEI		COMBINED	
	#	%	#	%	#	%
STARTING A BUSINESS	50	18%	40	18%	90	18%
BUDGETING	26	9%	23	11%	49	10%
LIVING AWAY FROM HOME	33	12%	27	12%	60	12%
WHATS IN MY COMMUNITY	5	2%	2	1%	7	1%
FINDING A JOB	58	20%	25	11%	83	17%
SETTING UP FLAT	13	5%	20	9%	33	7%
BANKING / INSURANCE	23	8%	14	6%	37	7%
DRIVING	50	18%	42	19%	92	18%
LEARNING A TRADE	19	7%	14	6%	33	7%
OTHER ²	7	2%	12	5%	19	4%
TOTAL	284	100%	219	100%	503	100%

² Other included: science apprenticeship, farming (4). Computer skills (3), snowboarding (2), vet, building, learning to invest money properly, advanced driving skills, managing and coaching sports teams, childcare/parenting, hairdressing/beauty, photography.